



# MONTHLY MEMBERSHIP PROGRESS REPORT

District 201N1

Results as of: 10/31/2015

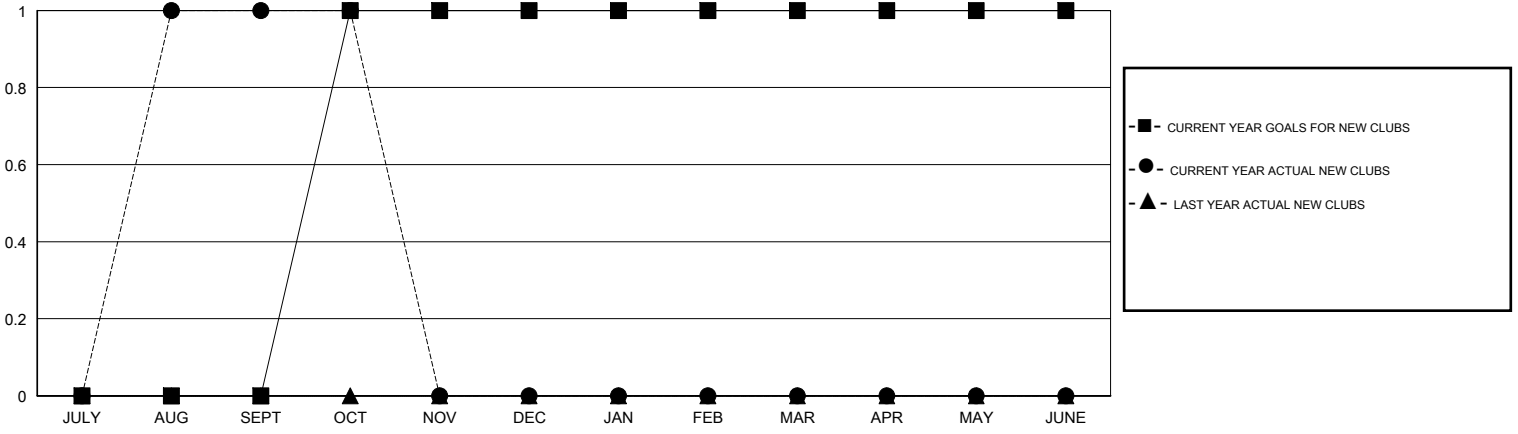
GMT: John Muller

LOCATION AUSTRALIA

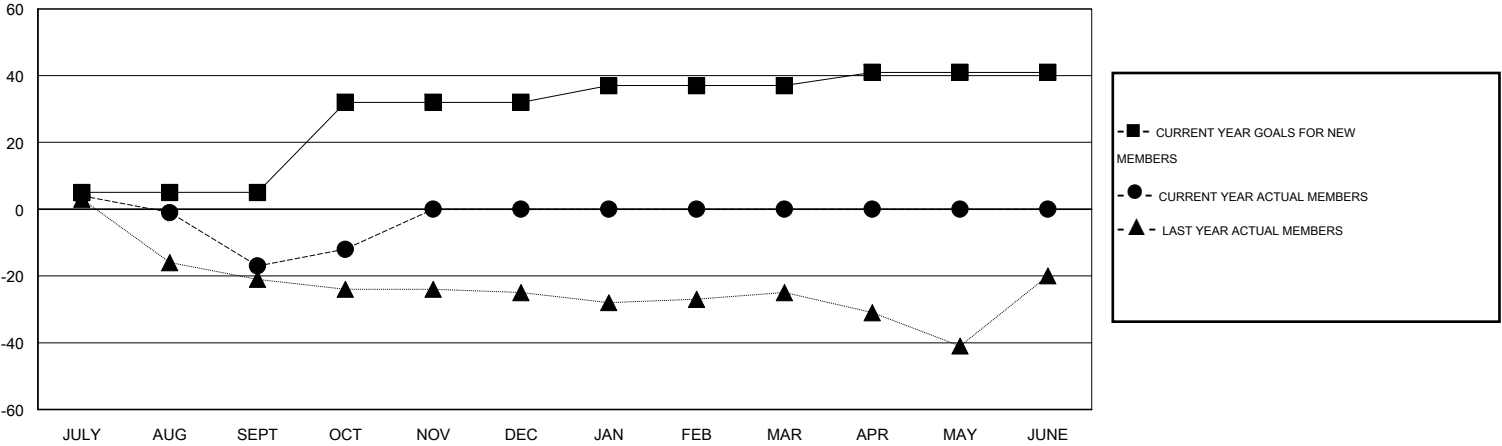
GMT CA 7

Clubs					Members				
RESULTS FOR 2015-2016					RESULTS FOR 2015-2016				
QUARTER	NEW CLUB GOAL	NEW CLUBS	DROPPED CLUBS	NET GAIN/LOSS	QUARTER	NEW MEMBER GOAL	CHARTER AND NEW MEMBERS ADDED	DROPPED MEMBERS	NET GAIN/LOSS
JULY/AUG/SEPT	0	1	1	0	JULY/AUG/SEPT	5	66	83	-17
OCT/NOV/DEC	1	0	0	0	OCT/NOV/DEC	27	12	7	5
JAN/FEB/MAR	0	0	0	0	JAN/FEB/MAR	5	0	0	0
APR/MAY/JUNE	0	0	0	0	APR/MAY/JUNE	4	0	0	0

GOALS AND ACTUAL NEW CLUBS CUMULATIVE



GOALS AND ACTUAL MEMBERS CUMULATIVE



DROPPED CLUBS: 1	29 CLUBS OF 64 ADDED 1 OR MORE NEW MEMBERS	<u>GENDER DISTRIBUTION</u>	
<u>DROPPED MEMBERS</u>		MALE	1,136 (74.35%)
DECEASED	11	FEMALE	392 (25.65%)
CLUB CANCELLED	0	<a href="#">CLICK HERE FOR HEALTH ASSESSMENT DATA</a>	
OTHER	79	FAMILY UNIT MEMBERS	246
TOTAL	90	HEAD OF HOUSEHOLD	120
		NON-HEAD OF HOUSEHOLD	126